



PeptideVerify | Certificate of Analysis

INDEPENDENT THIRD-PARTY PEPTIDE VERIFICATION

PREMIUM

Report PV-7CB661-IHCB-31

CERTIFICATE ID PV-7CB661-IHCB-31	ISSUE DATE 09/03/2026	BATCH/LOT N/A	CUSTOMER BioHack London
SAMPLE DESCRIPTION GHK Cu	EXPECTED MW 341.4 Da	ANALYSIS DATE 05/03/2026 14:57	INSTRUMENT LCMS Line 1

VERIFICATION SUMMARY

Purity (HPLC)

99%

Area% × PPI

Mass Match

Expected MW:	341.4 Da
Detected MW:	401.0 Da
Error:	+174541 ppm

MW calculated from m/z 402.05 [M+1H]⁺

ANALYTICAL RESULTS

VERIFIED PURITY

99%

HPLC Analysis - 2 Peaks

PEAK PURITY (PPI)

99%

Spectral homogeneity of main peak

MAIN PEAK AREA

99%

Main peak vs total integrated area

MAIN PEAK

#2 @ 5.685 min

TOTAL PEAKS

2

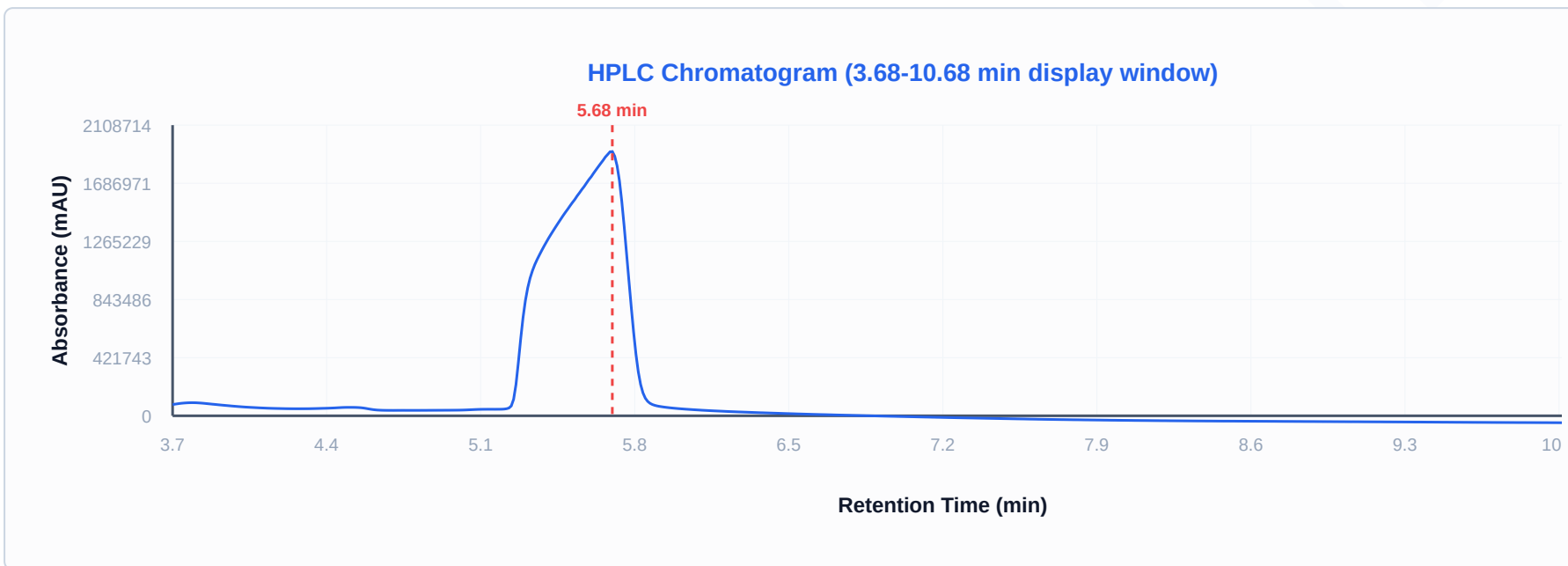
MS VERIFICATION

✓ Confirmed

DETECTION

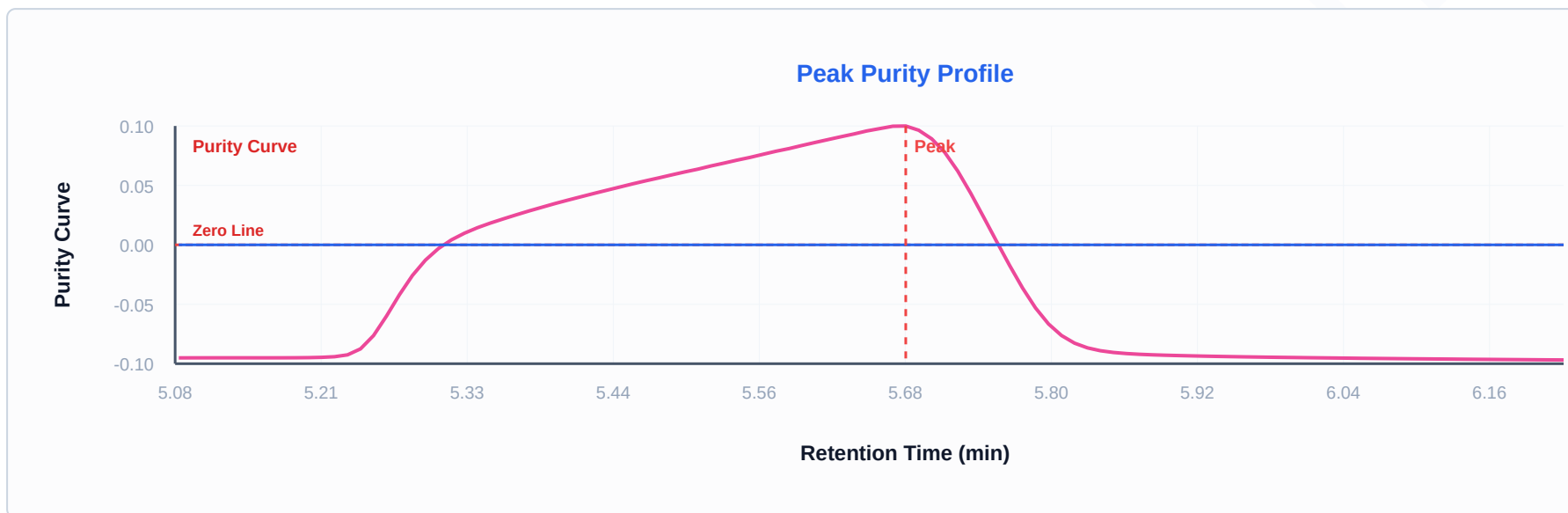
215 nm (± 4)

HPLC CHROMATOGRAM



Detection: 215 nm (± 4 nm)

PEAK PURITY PROFILE



PEAK INTEGRATION DATA

PEAK #	RETENTION (MIN)	AREA	HEIGHT	AREA %	WIDTH (MIN)	RESOLUTION (RS)	TAILING	PLATES (N)
1	3.776	2,528,531	N/A	5.30%	—	—	2.61	526
2	5.685	45,167,669	N/A	99.01%	—	3.06	0.67	1,494

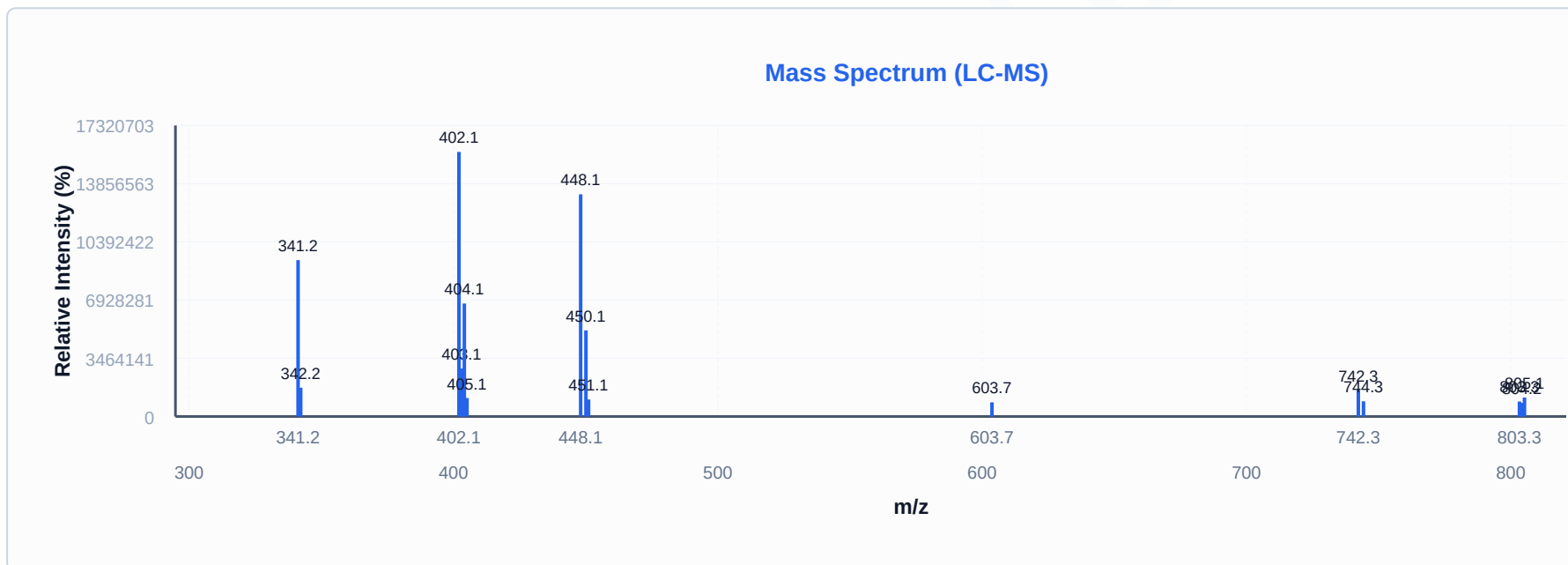
Resolution color-coded: Green ($Rs \geq 2.0$ or N/A for single peak), Yellow ($Rs \geq 1.0$), Red ($Rs < 1.0$). Values calculated from instrument data or derived from peak widths (USP <621>).

MASS SPECTROMETRY ANALYSIS (ESI+)

EXPECTED MW 341.4 Da	DETECTED MW 401.0 Da	MASS MATCH +174541 ppm	BASE PEAK m/z 402.05
---------------------------------------	---------------------------------------	---	---------------------------------------

Predicted charge states:

- z=2+ → m/z 171.71
- z=3+ → m/z 114.81
- z=4+ → m/z 86.36
- z=5+ → m/z 69.29
- z=6+ → m/z 57.91



DETECTED M/Z	ASSIGNMENT	INTENSITY	RELATIVE %
402.05	—	15,746,094	100.0%
448.10	—	13,223,633	84.0%
341.20	—	9,307,252	59.1%
404.10	—	6,724,967	42.7%

DETECTED M/Z	ASSIGNMENT	INTENSITY	RELATIVE %
450.10	—	5,125,577	32.6%
403.10	—	2,856,204	18.1%
342.20	[M+H] ⁺	1,715,426	10.9%
742.30	—	1,573,236	10.0%
805.15	—	1,131,844	7.2%
405.10	—	1,099,025	7.0%
451.10	—	1,013,391	6.4%
744.25	—	905,902	5.8%
803.25	—	892,589	5.7%
603.70	—	844,641	5.4%
804.20	—	811,944	5.2%

QUALITY CONTROL NOTES

Mass error +174541 ppm exceeds typical tolerance. Review recommended.

METHOD INFORMATION

Instrument	LCMS Line 1
Software	LabSolutions 5.97
Analyst	System Administrator
Method	HPLC-MS
Detection	215 nm (± 4 nm)
MS Ionization	Electrospray (ESI+)

ANALYST NOTES

Lab Observations: Form: Lyophilized powder Color: Other Condition: Minor issues noted Lab Notes: sample was slightly cloudy on dissolution

Purity Calculation Method: Purity is calculated in accordance with laboratory practice. Where a single chromatographic peak is present, purity is derived from the Peak Purity Index (PPI) — a measure of spectral homogeneity. Where multiple peaks are detected, purity is calculated as the chromatographic area percentage of the main peak multiplied by its Peak Purity Index (Area% \times PPI).



CERTIFICATE VERIFICATION

INDEPENDENTLY VERIFIED

peptideverify.co.uk/verify/PV-7CB661-IHCB-31

Scan QR code or visit the URL above to verify this certificate's authenticity and view detailed analysis data.

IMPORTANT NOTE

Sample Composition reflects UV-detectable compounds only. Non-UV excipients (mannitol, sugars, salts) are not measured by this method.

PeptideVerify — Independent Third-Party Peptide Verification

Analysis performed under controlled laboratory conditions by GLP-compliant analytical facilities.

Certificate ID: PV-7CB661-IHCB-31 | Batch/Lot: N/A | Customer: BioHack London | Generated: 09 Mar 2026, 22:36