



PeptideVerify | Certificate of Analysis

INDEPENDENT THIRD-PARTY PEPTIDE VERIFICATION

PREMIUM

Report PV-7CB661-IHCB-CA

CERTIFICATE ID PV-7CB661-IHCB-CA	ISSUE DATE 10/03/2026	BATCH/LOT N/A	CUSTOMER BioHack London
SAMPLE DESCRIPTION MOTS-c	EXPECTED MW 2174.6 Da	ANALYSIS DATE 10/03/2026 13:58	INSTRUMENT LCMS Line 1

VERIFICATION SUMMARY

Purity (HPLC)

99.4%

Single peak (PPI)

Mass Match

Expected MW:	2174.6 Da
Detected MW:	2173.9 Da
Error:	-317 ppm

MW calculated from m/z 544.5 [M+4H]⁴⁺

ANALYTICAL RESULTS

VERIFIED PURITY

99.4%

HPLC Analysis - Single Peak

MAIN PEAK

#1 @ 9.099 min

TOTAL PEAKS

1

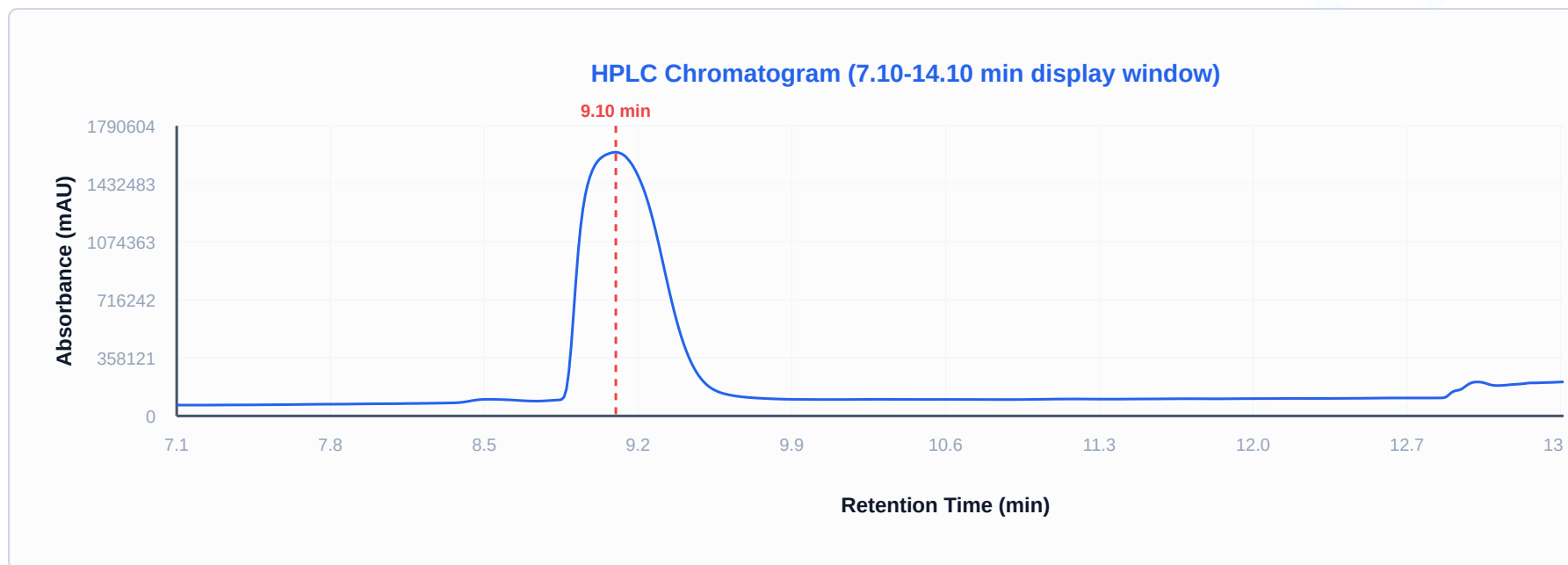
MS VERIFICATION

✓ Confirmed

DETECTION

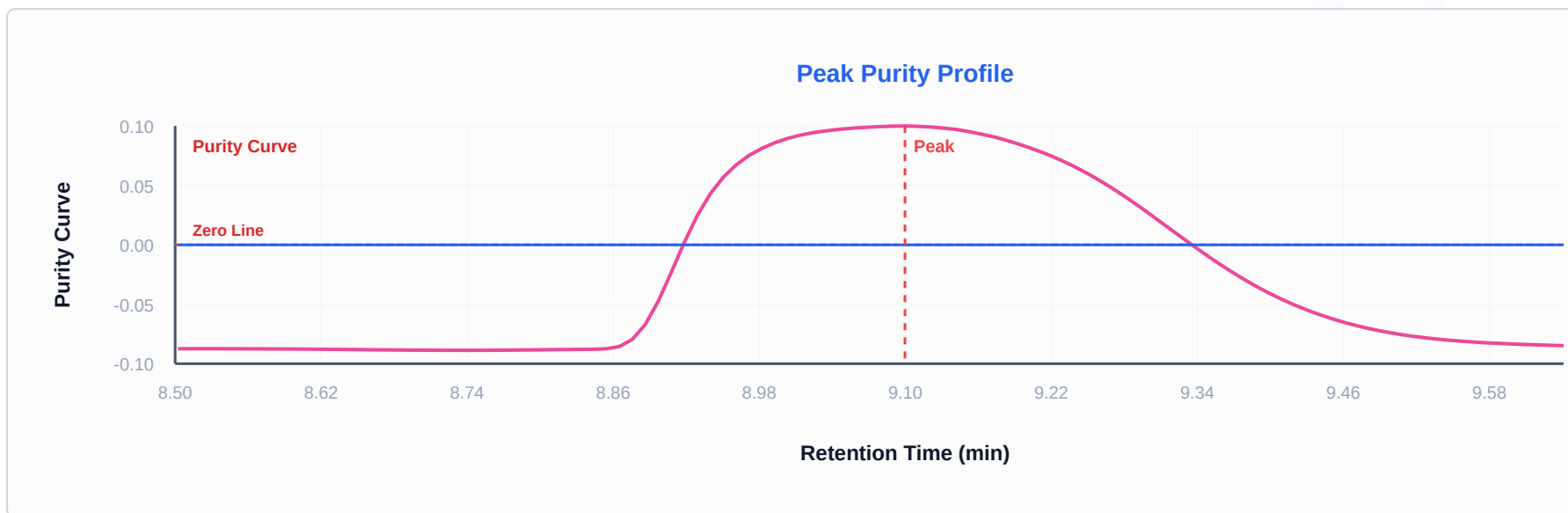
215 nm (± 4)

HPLC CHROMATOGRAM



Detection: 215 nm (± 4 nm)

PEAK PURITY PROFILE



PEAK INTEGRATION DATA

PEAK #	RETENTION (MIN)	AREA	HEIGHT	AREA %	WIDTH (MIN)	RESOLUTION (RS)	TAILING	PLATES (N)
1	9.099	37,700,549	N/A	100.00%	—	—	1.46	3,884

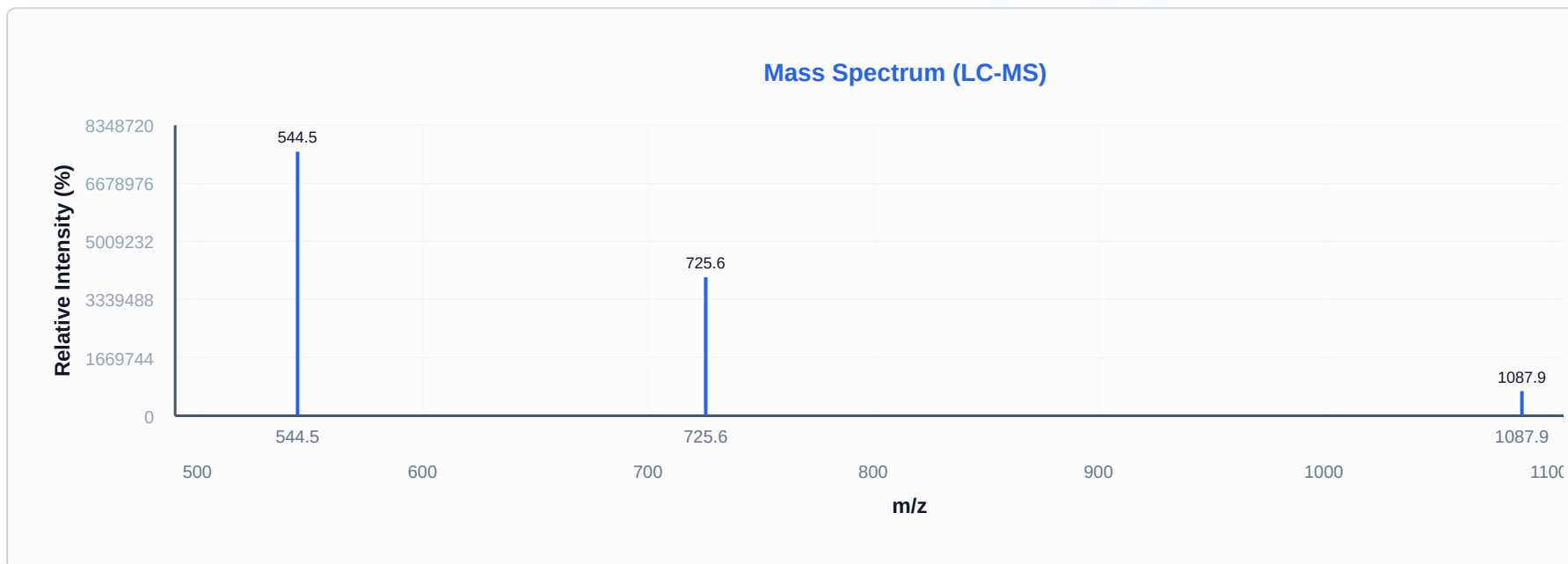
Resolution color-coded: Green ($R_s \geq 2.0$ or N/A for single peak), Yellow ($R_s \geq 1.0$), Red ($R_s < 1.0$). Values calculated from instrument data or derived from peak widths (USP <621>).

MASS SPECTROMETRY ANALYSIS (ESI+)

EXPECTED MW 2174.6 Da	DETECTED MW 2173.9 Da	MASS MATCH -317 ppm	BASE PEAK m/z 544.50
---------------------------------	---------------------------------	-------------------------------	--------------------------------

Predicted charge states:

- z=2+ → m/z 1088.30
- z=3+ → m/z 725.87
- z=4+ → m/z 544.65
- z=5+ → m/z 435.93
- z=6+ → m/z 363.44



DETECTED M/Z	ASSIGNMENT	INTENSITY	RELATIVE %
544.50	[M+4H] ⁴⁺	7,589,745	100.0%
725.65	[M+3H] ³⁺	3,978,761	52.4%
1087.90	[M+2H] ²⁺	707,740	9.3%

QUALITY CONTROL NOTES

Mass error -317 ppm exceeds typical tolerance. Review recommended.

METHOD INFORMATION

Instrument	LCMS Line 1
Software	LabSolutions 5.97
Analyst	System Administrator
Method	HPLC-MS
Detection	215 nm (± 4 nm)
MS Ionization	Electrospray (ESI+)

ANALYST NOTES

Lab Observations: Form: Lyophilized powder Color: White Condition: As expected - no issues

Purity Calculation Method: Purity is calculated in accordance with laboratory practice. Where a single chromatographic peak is present, purity is derived from the Peak Purity Index (PPI) — a measure of spectral homogeneity. Where multiple peaks are detected, purity is calculated as the chromatographic area percentage of the main peak multiplied by its Peak Purity Index (Area% \times PPI).



✓ **CERTIFICATE VERIFICATION**

INDEPENDENTLY VERIFIED

peptideverify.co.uk/verify/PV-7CB661-IHCB-CA

Scan QR code or visit the URL above to verify this certificate's authenticity and view detailed analysis data.

IMPORTANT NOTE

Sample Composition reflects UV-detectable compounds only. Non-UV excipients (mannitol, sugars, salts) are not measured by this method.

PeptideVerify — Independent Third-Party Peptide Verification

Analysis performed under controlled laboratory conditions by GLP-compliant analytical facilities.

Certificate ID: PV-7CB661-IHCB-CA | Batch/Lot: N/A | Customer: BioHack London | Generated: 10 Mar 2026, 22:31