



PeptideVerify | Certificate of Analysis

INDEPENDENT THIRD-PARTY PEPTIDE VERIFICATION

PREMIUM

Report PV-7CB661-IHCB-26

CERTIFICATE ID PV-7CB661-IHCB-26	ISSUE DATE 10/03/2026	BATCH/LOT N/A	CUSTOMER BioHack London
SAMPLE DESCRIPTION Retatrutide	EXPECTED MW 4731.4 Da	ANALYSIS DATE 10/03/2026 12:34	INSTRUMENT LCMS Line 1

VERIFICATION SUMMARY

Purity (HPLC)

99%

Single peak (PPI)

Mass Match

Expected MW: **4731.4 Da**

Detected MW: **4730.8 Da ✓**

MW calculated from m/z 1183.7 [M+4H]⁴⁺

ANALYTICAL RESULTS

VERIFIED PURITY

99%

HPLC Analysis - Single Peak

MAIN PEAK

#1 @ 9.931 min

TOTAL PEAKS

1

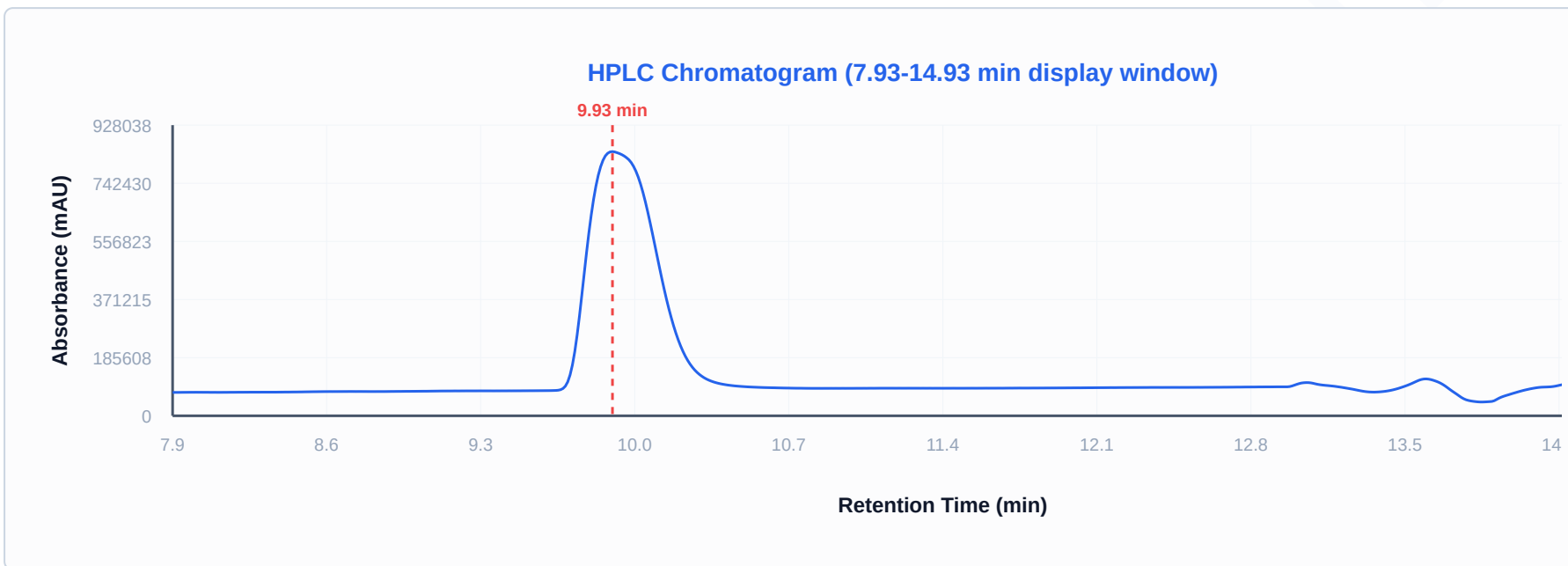
MS VERIFICATION

✓ Confirmed

DETECTION

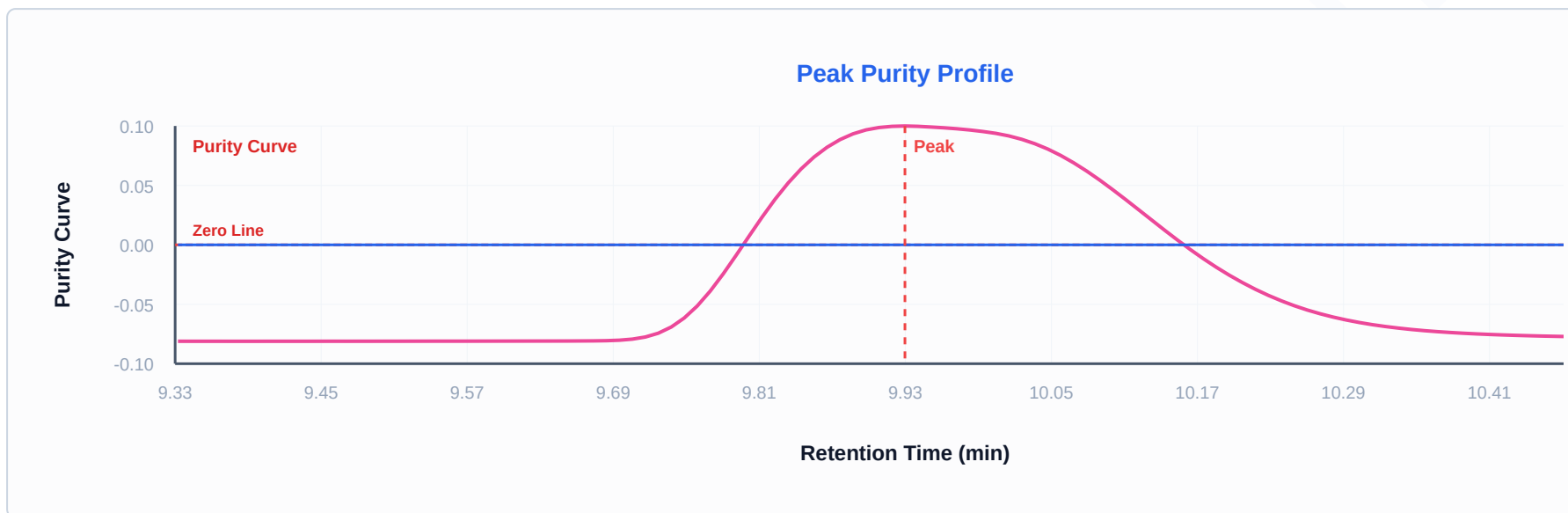
215 nm (± 4)

HPLC CHROMATOGRAM



Detection: 215 nm (± 4 nm)

PEAK PURITY PROFILE




PEAK INTEGRATION DATA

PEAK #	RETENTION (MIN)	AREA	HEIGHT	AREA %	WIDTH (MIN)	RESOLUTION (RS)	TAILING	PLATES (N)
1	9.931	16,121,413	N/A	99.03%	—	—	1.54	5,794

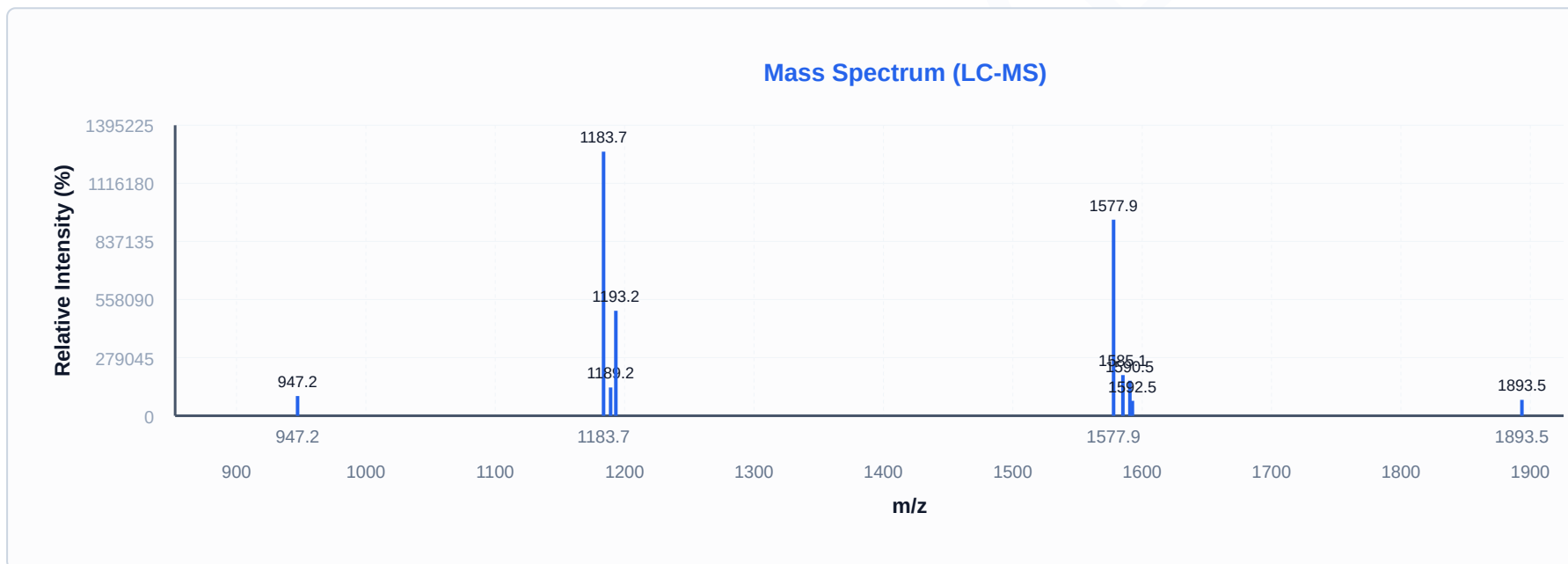
Resolution color-coded: Green ($R_s \geq 2.0$ or N/A for single peak), Yellow ($R_s \geq 1.0$), Red ($R_s < 1.0$). Values calculated from instrument data or derived from peak widths (USP <621>).

MASS SPECTROMETRY ANALYSIS (ESI+)

EXPECTED MW 4731.4 Da	DETECTED MW 4730.8 Da	MASS MATCH 	BASE PEAK m/z 1183.70
----------------------------------------	----------------------------------------	----------------------------------------------------------------------------------------------------------	----------------------------------------

Predicted charge states:

- z=2+ → m/z 2366.71
- z=3+ → m/z 1578.14
- z=4+ → m/z 1183.86
- z=5+ → m/z 947.29
- z=6+ → m/z 789.58



DETECTED M/Z	ASSIGNMENT	INTENSITY	RELATIVE %
1183.70	[M+4H] ⁴⁺	1,268,386	100.0%
1577.90	[M+3H] ³⁺	941,587	74.2%
1193.20	—	504,184	39.8%
1585.10	[M+Na+2H] ³⁺	195,390	15.4%

DETECTED M/Z	ASSIGNMENT	INTENSITY	RELATIVE %
1590.50	—	168,271	13.3%
1189.15	—	135,877	10.7%
947.20	—	94,755	7.5%
1893.50	—	76,300	6.0%
1592.45	—	71,810	5.7%

QUALITY CONTROL NOTES

Mass error -129 ppm — within acceptable analytical tolerance.

METHOD INFORMATION

Instrument	LCMS Line 1
Software	LabSolutions 5.97
Analyst	System Administrator
Method	HPLC-MS
Detection	215 nm (± 4 nm)
MS Ionization	Electrospray (ESI+)

ANALYST NOTES

Lab Observations: Form: Lyophilized powder Color: White Condition: As expected - no issues

Purity Calculation Method: Purity is calculated in accordance with laboratory practice. Where a single chromatographic peak is present, purity is derived from the Peak Purity Index (PPI) — a measure of spectral homogeneity. Where multiple peaks are detected, purity is calculated as the chromatographic area percentage of the main peak multiplied by its Peak Purity Index (Area% × PPI).



 **CERTIFICATE VERIFICATION**

INDEPENDENTLY VERIFIED

peptideverify.co.uk/verify/PV-7CB661-IHCB-26

Scan QR code or visit the URL above to verify this certificate's authenticity and view detailed analysis data.

IMPORTANT NOTE

Sample Composition reflects UV-detectable compounds only. Non-UV excipients (mannitol, sugars, salts) are not measured by this method.

PeptideVerify — Independent Third-Party Peptide Verification

Analysis performed under controlled laboratory conditions by GLP-compliant analytical facilities.

Certificate ID: PV-7CB661-IHCB-26 | Batch/Lot: N/A | Customer: BioHack London | Generated: 10 Mar 2026, 22:30