



PeptideVerify | Certificate of Analysis

INDEPENDENT THIRD-PARTY PEPTIDE VERIFICATION

PREMIUM

Report PV-88B50C-BXAD-71

CERTIFICATE ID PV-88B50C-BXAD-71	ISSUE DATE 23/03/2026	BATCH/LOT N/A	CUSTOMER BioHack London
SAMPLE DESCRIPTION SLU-PP-332	EXPECTED MW 290.3 Da	ANALYSIS DATE 20/03/2026 10:50	INSTRUMENT LCMS Line 1

VERIFICATION SUMMARY

Purity (HPLC)

99%

Area% × PPI

Mass Match

Expected MW: **290.3 Da**

Detected MW: **290.1 Da ✓**

MW calculated from m/z 291.15 [M+1H]⁺

ANALYTICAL RESULTS

VERIFIED PURITY

99%

HPLC Analysis - 2 Peaks

PEAK PURITY (PPI)

99%

Spectral homogeneity of main peak

MAIN PEAK AREA

99%

Main peak vs total integrated area

MAIN PEAK

#1 @ 2.699 min

TOTAL PEAKS

2

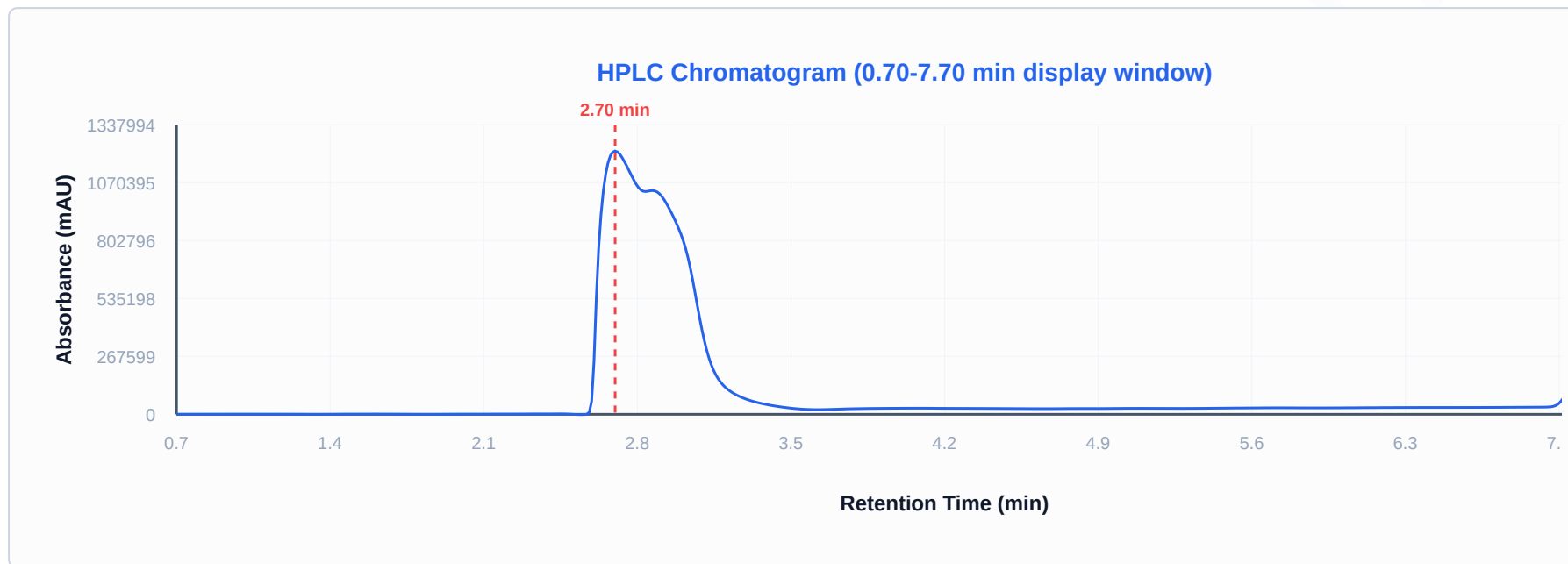
MS VERIFICATION

✓ Confirmed

DETECTION

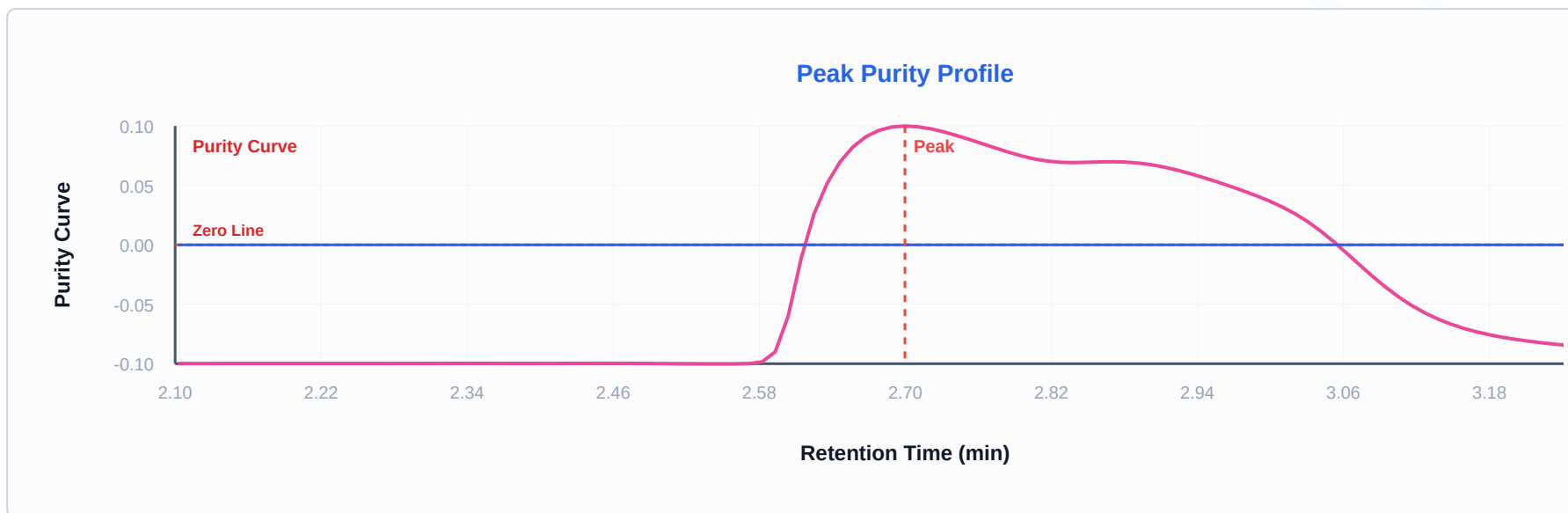
215 nm (± 4)

HPLC CHROMATOGRAM



Detection: 215 nm (± 4 nm)

PEAK PURITY PROFILE



PEAK INTEGRATION DATA

PEAK #	NAME	RETENTION (MIN)	AREA	HEIGHT	AREA %	WIDTH (MIN)	RESOLUTION (RS)	TAILING	PLATES (N)
1	DMSO	2.699	30,017,427	N/A	99.00%	—	—	3.23	335
2	SLU-PP-332	7.115	3,647,814	N/A	10.84%	—	8.87	2.57	4,908

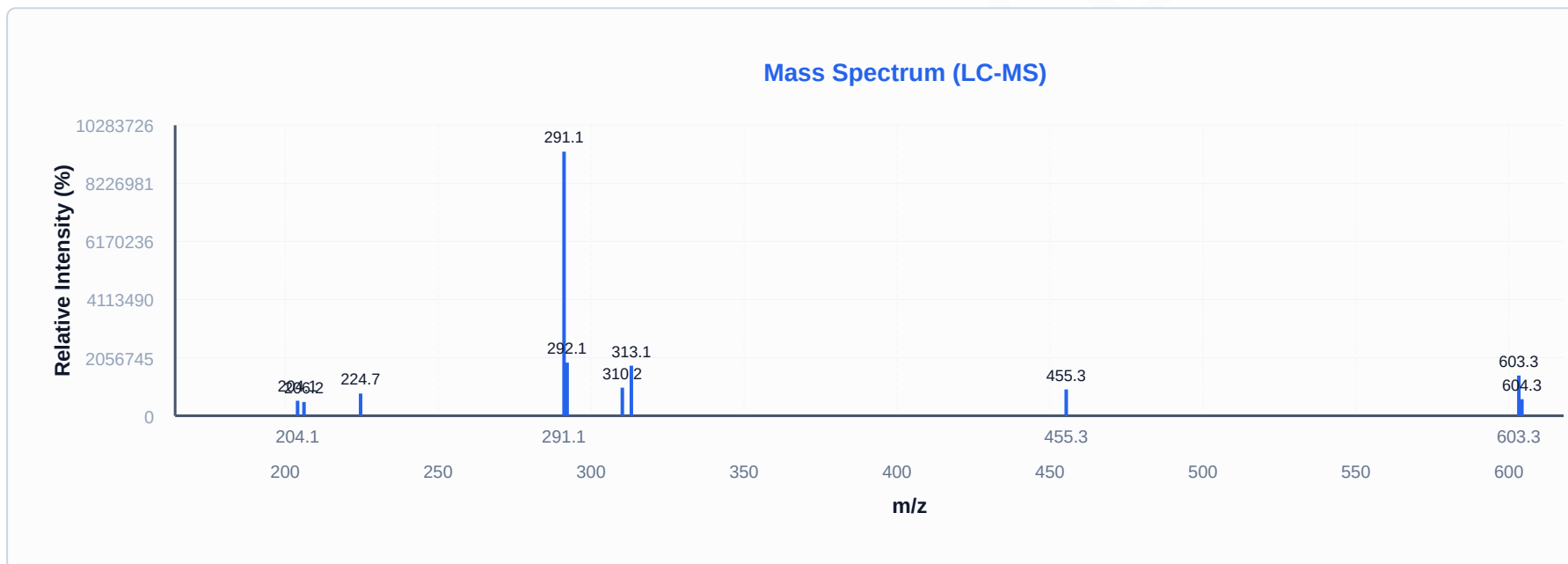
Resolution color-coded: Green ($Rs \geq 2.0$ or N/A for single peak), Yellow ($Rs \geq 1.0$), Red ($Rs < 1.0$). Values calculated from instrument data or derived from peak widths (USP <621>).

MASS SPECTROMETRY ANALYSIS (ESI+)

EXPECTED MW 290.3 Da	DETECTED MW 290.1 Da	MASS MATCH ✓	BASE PEAK m/z 291.15
--------------------------------	--------------------------------	------------------------	--------------------------------

Predicted charge states:

- z=2+ → m/z 146.17
- z=3+ → m/z 97.78
- z=4+ → m/z 73.59
- z=5+ → m/z 59.07
- z=6+ → m/z 49.39



DETECTED M/Z	ASSIGNMENT	INTENSITY	RELATIVE %
291.15	[M+H] ⁺	9,348,842	100.0%
292.15	—	1,881,158	20.1%
313.15	—	1,772,921	19.0%
603.25	—	1,424,166	15.2%

DETECTED M/Z	ASSIGNMENT	INTENSITY	RELATIVE %
310.20	—	994,833	10.6%
455.30	—	932,239	10.0%
224.65	—	786,949	8.4%
604.25	—	586,274	6.3%
204.05	—	531,904	5.7%
206.15	—	486,376	5.2%

METHOD INFORMATION

Instrument	LCMS Line 1
Software	LabSolutions 5.97
Analyst	System Administrator
Method	HPLC-MS
Detection	215 nm (±4 nm)
MS Ionization	Electrospray (ESI+)

ANALYST NOTES

Lab Observations: Form: Lyophilized powder Color: White Condition: As expected - no issues

Purity Calculation Method: Purity is calculated in accordance with laboratory practice. Where a single chromatographic peak is present, purity is derived from the Peak Purity Index (PPI) — a measure of spectral homogeneity. Where multiple peaks are detected, purity is calculated as the chromatographic area percentage of the main peak multiplied by its Peak Purity Index (Area% × PPI).



✓ **CERTIFICATE VERIFICATION**

INDEPENDENTLY VERIFIED

peptideverify.co.uk/verify/PV-88B50C-BXAD-71

Scan QR code or visit the URL above to verify this certificate's authenticity and view detailed analysis data.

IMPORTANT NOTE

Sample Composition reflects UV-detectable compounds only. Non-UV excipients (mannitol, sugars, salts) are not measured by this method.

PeptideVerify — Independent Third-Party Peptide Verification

Analysis performed under controlled laboratory conditions using validated analytical methods.

This certificate relates solely to the sample as received and tested. Issued for research and informational purposes only — not an endorsement for human or veterinary use.

Certificate ID: PV-88B50C-BXAD-71 | Batch/Lot: N/A | Customer: BioHack London | Generated: 23 Mar 2026, 16:46