



PeptideVerify | Certificate of Analysis

INDEPENDENT THIRD-PARTY PEPTIDE VERIFICATION

PREMIUM

Report PV-88B50C-BXAD-88

CERTIFICATE ID PV-88B50C-BXAD-88	ISSUE DATE 23/03/2026	BATCH/LOT N/A	CUSTOMER BioHack London
SAMPLE DESCRIPTION Tesamorelin	EXPECTED MW 5135.9 Da	ANALYSIS DATE 23/03/2026 09:13	INSTRUMENT LCMS Line 1

VERIFICATION SUMMARY

Purity (HPLC)

99%

Single peak (PPI)

Mass Match

Expected MW: **5135.9 Da**

Detected MW: **5135.0 Da ✓**

MW calculated from m/z 1028 [M+5H]⁴⁺

ANALYTICAL RESULTS

VERIFIED PURITY

99%

HPLC Analysis - Single Peak

MAIN PEAK

#1 @ 6.229 min

TOTAL PEAKS

1

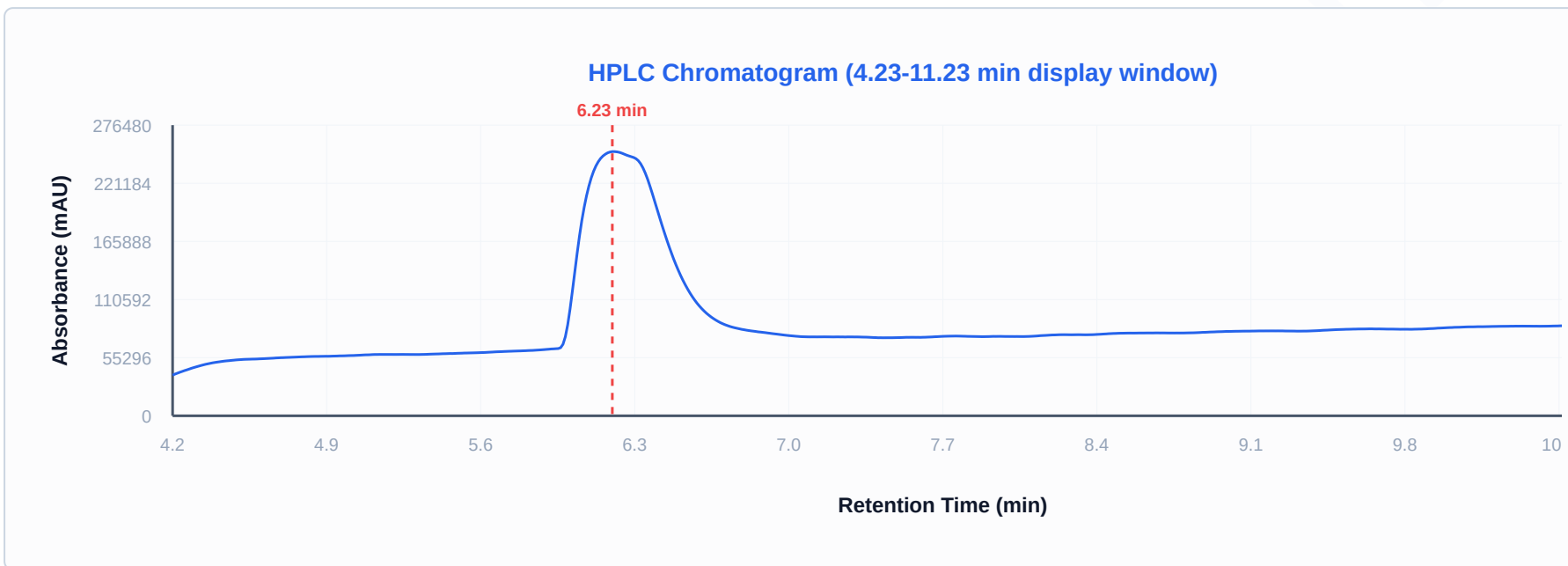
MS VERIFICATION

✓ Confirmed

DETECTION

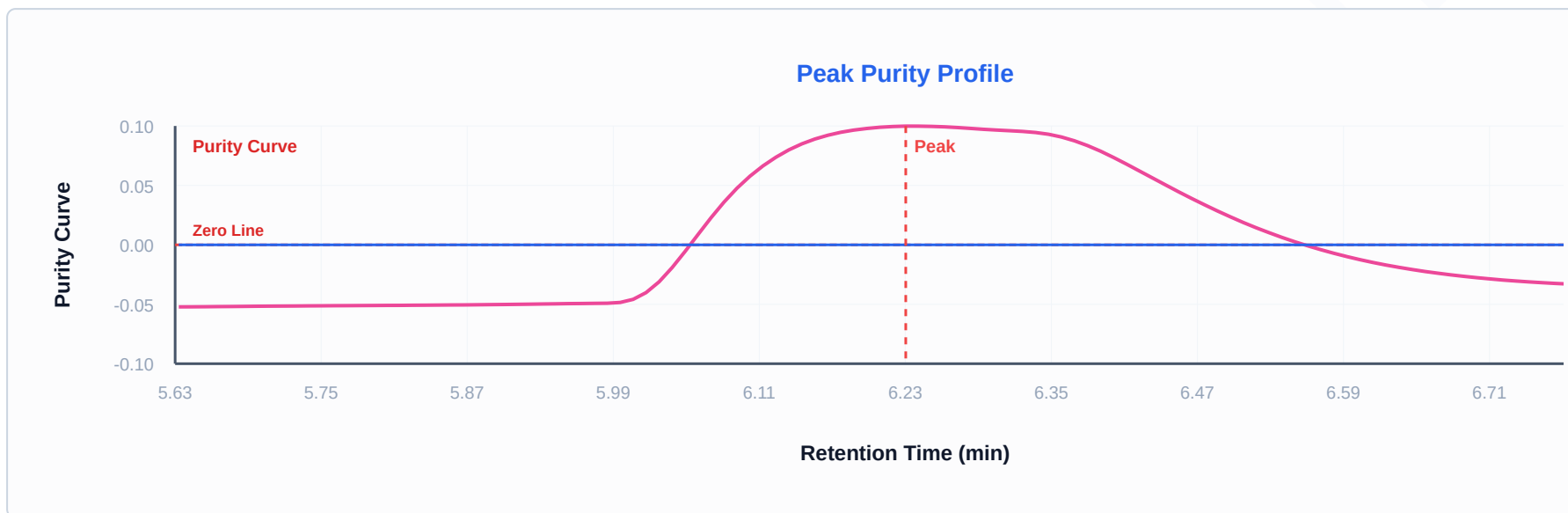
215 nm (± 4)

HPLC CHROMATOGRAM



Detection: 215 nm (± 4 nm)

PEAK PURITY PROFILE



PEAK INTEGRATION DATA

PEAK #	RETENTION (MIN)	AREA	HEIGHT	AREA %	WIDTH (MIN)	RESOLUTION (RS)	TAILING	PLATES (N)
1	6.229	4,802,631	N/A	99.02%	—	—	1.81	1,684

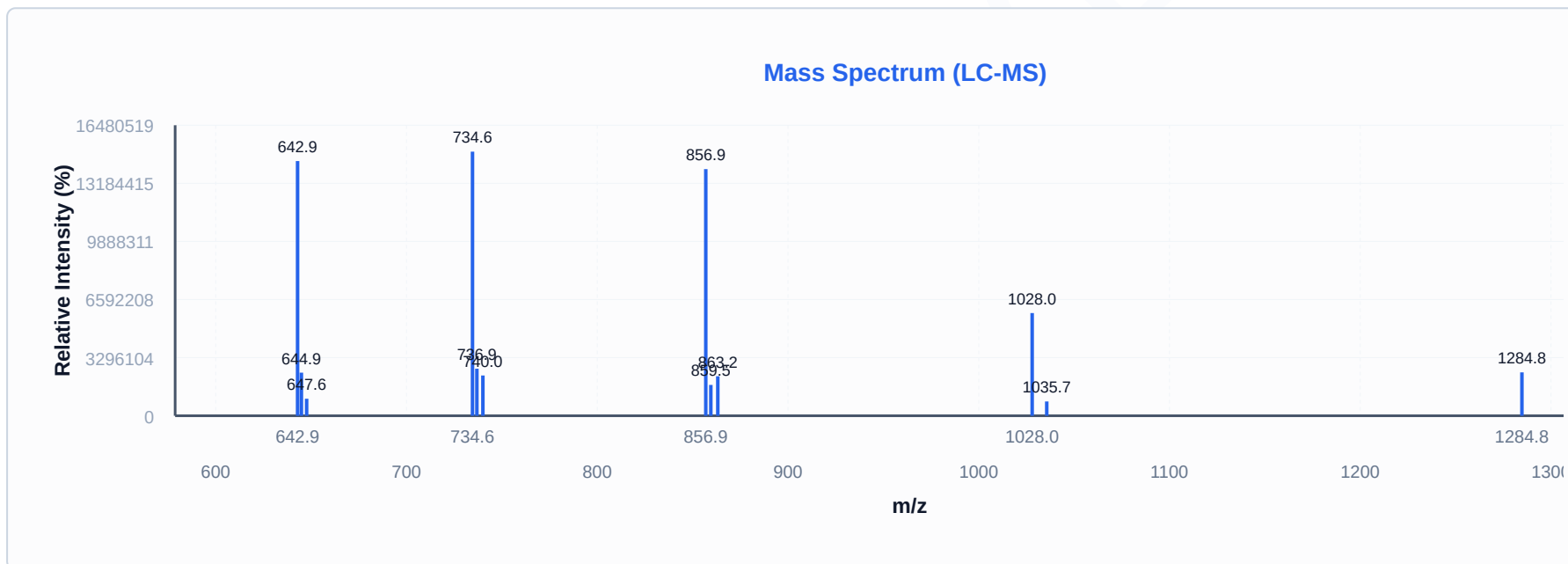
Resolution color-coded: Green ($R_s \geq 2.0$ or N/A for single peak), Yellow ($R_s \geq 1.0$), Red ($R_s < 1.0$). Values calculated from instrument data or derived from peak widths (USP <621>).

MASS SPECTROMETRY ANALYSIS (ESI+)

EXPECTED MW 5135.9 Da	DETECTED MW 5135.0 Da	MASS MATCH 	BASE PEAK m/z 734.60
----------------------------------------	----------------------------------------	-----------------------	---------------------------------------

Predicted charge states:

- z=2+ → m/z 2568.96
- z=3+ → m/z 1712.97
- z=4+ → m/z 1284.98
- z=5+ → m/z 1028.19
- z=6+ → m/z 856.99



DETECTED M/Z	ASSIGNMENT	INTENSITY	RELATIVE %
734.60	—	14,982,290	100.0%
642.90	—	14,448,600	96.4%
856.90	—	13,991,411	93.4%
1028.00	—	5,826,134	38.9%

DETECTED M/Z	ASSIGNMENT	INTENSITY	RELATIVE %
736.90	—	2,670,350	17.8%
1284.75	[M+4H] ⁴⁺	2,462,145	16.4%
644.90	—	2,445,653	16.3%
740.05	—	2,284,892	15.3%
863.20	—	2,241,555	15.0%
859.55	—	1,749,246	11.7%
647.65	—	965,692	6.4%
1035.65	—	811,467	5.4%

METHOD INFORMATION

Instrument	LCMS Line 1
Software	LabSolutions 5.97
Analyst	System Administrator
Method	HPLC-MS
Detection	215 nm (±4 nm)
MS Ionization	Electrospray (ESI+)

ANALYST NOTES

Lab Observations: Form: Lyophilized powder Color: White Condition: As expected - no issues

Purity Calculation Method: Purity is calculated in accordance with laboratory practice. Where a single chromatographic peak is present, purity is derived from the Peak Purity Index (PPI) — a measure of spectral homogeneity. Where multiple peaks are detected, purity is calculated as the chromatographic area percentage of the main peak multiplied by its Peak Purity Index (Area% × PPI).



 **CERTIFICATE VERIFICATION**

INDEPENDENTLY VERIFIED

peptideverify.co.uk/verify/PV-88B50C-BXAD-88

Scan QR code or visit the URL above to verify this certificate's authenticity and view detailed analysis data.

IMPORTANT NOTE

Sample Composition reflects UV-detectable compounds only. Non-UV excipients (mannitol, sugars, salts) are not measured by this method.

PeptideVerify — Independent Third-Party Peptide Verification

Analysis performed under controlled laboratory conditions using validated analytical methods.

This certificate relates solely to the sample as received and tested. Issued for research and informational purposes only — not an endorsement for human or veterinary use.

Certificate ID: PV-88B50C-BXAD-88 | Batch/Lot: N/A | Customer: BioHack London | Generated: 23 Mar 2026, 16:45